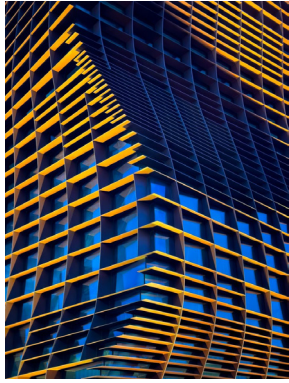


mFA Winter Member Show 2025



Graceful Curves, digital photography, Judy Guenther, from Winter Member Show 2024

Maryland Federation of Art (MFA) invites all MFA Members residing in any of the states or territories of the US, Canada, and Mexico to enter our Winter Member Show 2025. Any original 2D or 3D work will be considered. Works selected by the Juror will be exhibited in MFA's Circle Gallery from January 2 – 25, 2025.

JUROR INFORMATION

Robert Brinkerhoff was born in Okinawa to American parents and raised in Virginia. Since his arrival at RISD in 1996, his teaching has focused on illustration concepts classes and the synthesis of illustration and design. As an illustrator and designer, Brinkerhoff's clients have included corporations, institutions of higher learning such as Massachusetts Institute of Technology, Brown University and Brandeis University, and regional and national magazines. His illustrations have stood out in numerous competitions sponsored by the University and College Designer's Association (UCDA), the Council for the Advancement and Support of Education (CASE) and the Society of Illustrators, among others, and appeared in annuals such as Print, How and American Illustration. He has exhibited both nationally and internationally and has been awarded artist residencies in the US, Italy and the Republic of Ireland. Brinkerhoff has served as both the head of Illustration and chief critic for RISD's European Honors Program in Rome.

TERMS OF ENTRY

- Entry is open to MFA members residing in any of the states or territories of the US, Canada, and Mexico.
- Entering this exhibition indicates understanding and agreement on the part of the artist with the conditions stated herein and with (a) [MFA's approved Statement of Equity and Diversity](#) and (b) [MFA's General Guidelines](#). Work must meet exhibition guidelines to be included in the event. MFA may determine work ineligible if entry guidelines are not followed. Work delivered must correspond with the images submitted to the juror.
- Images of accepted works may be used at the sole discretion of MFA for promotional purposes including, but not limited to: the invitation, catalog, website, social media, or a subsequent year's prospectus. Images will include attribution wherever possible.
- Work cannot be withdrawn before the end of the event.
- Artists will retain 75% from sales. MFA will retain 25% commission on any work sold through MFA.
- Work must be for sale. Work can be set to Price on Request (POR).
- Non-member entrants who have a discrepancy between the entry fee paid and their membership status must pay the difference before the entry deadline date or their work will not be shown to the juror.

ENTRY REQUIREMENTS

- All work must be uploaded through [artcall.org](#). File size may be no more than 10 MB. Images for the juror must correspond with the actual work. MFA does not display watermarks; artists display at their own risk.
- For video submissions: you must put the link to the video in the Linked Web Resource field, and then upload a still frame from the video. For accepted video submissions, the artist will be expected to deliver the file to MFA on a thumbdrive.
- All entries must be original and completed solely by the artist's hand. A maximum of 6 original works created within the past 3 years may be entered. Work previously exhibited at MFA Circle Gallery is not eligible for re-entry.
- Maximum size of work, including edges of artwork or frame, cannot exceed 72" in any direction. Artists may be asked to assist with the installation of oversized work (greater than 60" or over 40 lbs).

ENTRY FEE

- 1 or 2 entries \$45 (MFA Members \$30). Up to 4 additional entries \$6.75 each (MFA Members \$4.50). Entry fees are non-refundable.

LIABILITY

- Artwork will be handled with all possible care. MFA will not be responsible or liable for loss or damage from any cause whatsoever. Insurance, if desired, must be carried by the artist.

NOTIFICATION

- All artists will receive notification by email. Accepted artists and artwork will also be posted on MFA's website.
- **Artists who have unsubscribed from MFA emails will not receive notification.**
- The notice to accepted artists will include specific details and may vary from prospectus. See website for more details.

AWARD

- Cash awards presented by the juror total \$500. A \$100 Conley Award for 3D work is funded and selected by Susi and Rob Conley.

SCHEDULE

Sep 10	Online Entry Opens for Submissions
Oct 30	Entry Deadline
Dec 5	Notification @ 5 PM
Dec 22 – 23	Accepted and Shipped Work Must Arrive at MFA Circle Gallery 11 AM – 4 PM
Jan 2	Exhibition Opens
Jan 5	Virtual Awards Ceremony @ 4 PM
Jan 25	Last Day of Exhibition; In-Person Reception at MFA Circle Gallery 4 – 6 PM
Jan 26 – 27	Pick Up Hand-Delivered Work 11 AM – 4 PM
Jan 30	Shipped Work Will Be Sent

MFA Circle Gallery Celebrating 60 Years

18 State Circle, Annapolis, MD | Open daily from 11 AM – 5 PM
410-268-4566 | info@mdfedart.org | mdfedart.org
MD Relay 7-1-1 or 1-800-735-2258
Circle Gallery is accessible to people with mobility disabilities

Established in 1963, MFA is a 501(c)(3) non-profit arts organization supported by individual, corporate, and public sector contributions, including the Maryland State Arts Council and the Anne Arundel County Arts Council. For membership and exhibition information, please visit mdfedart.org.