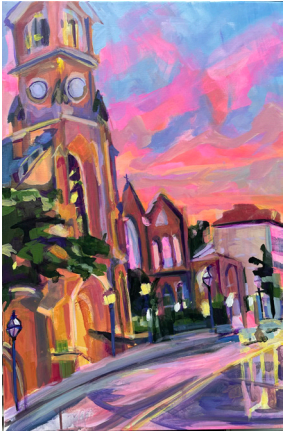




# American Landscapes 2023: Scenes from the Americas



*Carolina on My Mind*,  
acrylic on canvas, Madeleine Greenwald  
from American Landscapes 2022

From the oceans surrounding it to the mountains dividing it, this land is home to some of the world's most powerful landscapes. Whether urban, rural, or suburban, landscapes are always changing. Show us the landscapes of your life. Open to all media following exhibition guidelines, MFA will showcase any original 2D or 3D work depicting a landscape from the Americas (North America, Hawaii, Central America, the Caribbean, and South America). Works selected by the juror will be exhibited in MFA's Circle Gallery from August 30 – September 23, 2023.

## JUROR INFORMATION

Nora Sturges is Area Head of Painting and Drawing in the Department of Art + Design, Art History, and Art Education at Towson University in Maryland. She has exhibited her paintings in numerous solo and group exhibitions in galleries and museums in the United States, Canada, and Europe, and has been recognized numerous times for her thought provoking work by the Maryland State Arts Council and in the publication *New American Paintings*. She received her B.A., Magna Cu, Laude in Studio Art from Bowdoin College, Maine, and an M.F.A. in painting from Ohio University. See her work and learn more at [norasturges.com](http://norasturges.com).

## TERMS OF ENTRY

- Entry is open to artists residing in any of the states or territories of the US, Canada, and Mexico.
- Entering this exhibition indicates understanding and agreement on the part of the artist with the conditions stated herein and with (a) [MFA's approved Statement of Equity and Diversity](#) and (b) [MFA's General Guidelines](#). Work must meet exhibition guidelines to be included in the event. MFA may determine work ineligible if entry guidelines are not followed. Work delivered must correspond with the image(s) submitted to the juror.
- Images of accepted works may be used at the sole discretion of MFA for promotional purposes including, but not limited to: the invitation, catalog, website, social media, or a subsequent year's prospectus. Images will include attribution wherever possible.
- Work cannot be withdrawn before the end of the event.
- Artists will retain 70% from sales (75% for MFA Members). MFA will retain 30% commission (25% for MFA Members at the time of the sale) on any work sold through MFA.
- Work must be for sale. Work can be set to Price on Request (POR).

## ENTRY REQUIREMENTS

- All work must be entered by uploading JPEG images through MFA's online entry system. Set pixel dimension to between 1,500 and 3,000 pixels on the longest side. File size may be no more than 5 MB. Images for the juror must correspond with the actual work. MFA does not display watermarks; artists display at their own risk. Visit [mdfedart.com/portfolio/297/](http://mdfedart.com/portfolio/297/) to submit your work.
- For video submissions: upload a still frame from your video, and in the "media" section, put the media and then include a public YouTube or Vimeo link to the video. For accepted video work, the artist will be expected to deliver the file to MFA on a thumbdrive.
- All entries must be original and completed solely by the artist's hand. A maximum of 6 original works created within the past 3 years may be entered. Work previously exhibited at MFA Circle Gallery is not eligible for re-entry.
- Maximum size of work, including edges of artwork or frame, cannot exceed 72" in any direction. Artists may be asked to assist with the installation of oversized work (greater than 60" or over 40 lbs).

## ENTRY FEE

- 1 or 2 entries \$40 (MFA Members \$25). Additional 4 entries \$5 each. Entry fees are non-refundable.

## LIABILITY

- Artwork will be handled with all possible care. MFA will not be responsible or liable for loss or damage from any cause whatsoever. Insurance, if desired, must be carried by the artist.

## NOTIFICATION

- All artists will receive notification by email. Accepted artists and artwork will also be posted on MFA's website.
- **Artists who have unsubscribed from MFA emails will not receive notification.**
- The notice to accepted artists will include specific details and may vary from prospectus. See website for more details.

## AWARDS

- Cash awards total \$1,000.

## SCHEDULE

<b>Apr 19</b>	Online Entry Opens for Submissions
<b>Jun 21</b>	Entry Deadline
<b>Jul 18</b>	Notification @ 5 PM
<b>Aug 23 – 27</b>	Accepted and Shipped Work Must Arrive at MFA Circle Gallery 11 AM – 4 PM
<b>Aug 30</b>	Exhibition Opens
<b>Sep 10</b>	Virtual Awards Ceremony from 4 – 5 PM
<b>Sep 23</b>	Last Day of Exhibition; In-Person Reception at MFA Circle Gallery from 4 – 6 PM
<b>Sep 24 – 25</b>	Pick Up Hand-Delivered Work from 11 AM – 4 PM
<b>Sep 27</b>	Shipped Work Will Be Sent

## MFA Circle Gallery Celebrating 60 Years

18 State Circle, Annapolis, MD | Open daily from 11 AM – 5 PM  
410-268-4566 | [info@mdfedart.org](mailto:info@mdfedart.org) | [mdfedart.org](http://mdfedart.org)  
MD Relay 7-1-1 or 1-800-735-2258  
Circle Gallery is accessible to people with mobility disabilities

Established in 1963, MFA is a 501(c)(3) non-profit arts organization supported by individual, corporate, and public sector contributions, including the Maryland State Arts Council and the Anne Arundel County Arts Council. For membership and exhibition information, please visit [mdfedart.org](http://mdfedart.org).