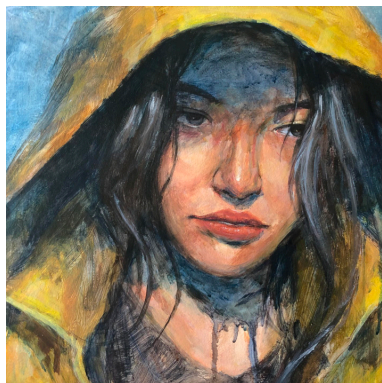


mFA Strokes of Genius 2022



"We were caught in a storm...or something of the sort."
acrylic on cradled panel,
by Marisa S. Evangelista,
from Strokes of Genius 2021

A painter creates with head, heart, and hand. The sweep and flow of the brush in that hand conveys all that is in the head and heart of the artist and physical power and emotional tenderness are transmitted to paper and canvas. The brushstroke becomes the artist's voice and communicates with the viewer throughout time. Maryland Federation of Art (MFA) invites all artists residing in any of the states or territories of the US, Canada, and Mexico to enter our 11th annual all-painting competition, Strokes of Genius. All original 2D work created through any painting media (oil, pastel, acrylic, watercolor, encaustic, etc.) and following entry guidelines will be considered. Works selected by the juror will be exhibited in MFA's Circle Gallery from November 2 – 26, 2022.

JUROR INFORMATION

Jack Rasmussen earned his MFA in Painting, MA in Arts Management, and his MA and PhD in Anthropology at American University. He worked at the National Gallery of Art before becoming the assistant director of the Washington Project for the Arts when it opened in 1975. He opened the Jack Rasmussen Gallery, one of the first commercial galleries to move to downtown Washington, and then helped launch Rockville Arts Place (now VisArts). He served for ten years as the executive director of Maryland Art Place in Baltimore and three years as executive director of di Rosa, a contemporary art museum and sculpture garden in Napa, California. Rasmussen has been director and curator of the American University Museum at the Katzen Arts Center since it opened in 2005. He also currently serves on the Maryland State Arts Council.

TERMS OF ENTRY

- Entry is open to artists residing in any of the states or territories of the US, Canada, and Mexico.
- Entering this exhibition indicates understanding and agreement on the part of the artist with the conditions stated herein and with (a) [MFA's approved Statement of Equity and Diversity](#) and (b) [MFA's General Guidelines](#). Work must meet exhibition guidelines to be included in the event. MFA may determine work ineligible if entry guidelines are not followed. Work delivered must correspond with the images submitted to the juror.
- Images of accepted works may be used at the sole discretion of MFA for promotional purposes including, but not limited to: the invitation, catalog, website, social media, or a subsequent year's prospectus. Images will include attribution wherever possible.
- Work cannot be withdrawn before the end of the event.
- Artists will retain 70% from sales (75% for MFA Members). MFA will retain 30% commission (25% for MFA Members) on any work sold through MFA.
- Work must be for sale. Work can be set to Price on Request (POR).

ENTRY REQUIREMENTS

- All work must be entered by uploading JPEG images through MFA's online entry system. Set pixel dimension to between 1,500 and 3,000 pixels on the longest side. File size may be no more than 5 MB. Images for the juror must correspond with the actual work. MFA does not display watermarks; artists display at their own risk. Visit mdfedart.com/portfolio/266/ to submit your work.
- For video submissions: upload a still frame from your video, and in the "media" section, put the media and then include a public YouTube or Vimeo link to the video.
- All entries must be original and completed solely by the artist's hand. A maximum of 6 original works created within the past 3 years may be entered. Work previously exhibited at MFA Circle Gallery is not eligible for re-entry.
- Maximum size of work, including edges of artwork or frame, cannot exceed 72" in any direction. Artists may be asked to assist with the installation of oversized work (greater than 60" or over 40 lbs).

ENTRY FEE

- 1 or 2 entries \$40 (MFA Members \$25). Additional 4 entries \$5 each. Entry fees are non-refundable.

LIABILITY

- Artwork will be handled with all possible care. MFA will not be responsible or liable for loss or damage from any cause whatsoever. Insurance, if desired, must be carried by the artist.

NOTIFICATION

- All artists will receive notification by email. Accepted artists and artwork will also be posted on MFA's website.
- **Artists who have unsubscribed from MFA emails will not receive notification.**
- The notice to accepted artists will include specific details and may vary from prospectus. See website for more details.

AWARD

- Cash awards total \$1,000.

SCHEDULE

Jul 12	Online Entry Opens for Submissions
Sept 7	Entry Deadline
Oct 4	Notification
Oct 26 – 30	Accepted and Shipped Work Must Arrive at MFA Circle Gallery
Nov 2	Exhibition Opens
Nov 6	Virtual Awards Ceremony @ 4 PM
Nov 26	Exhibition Closes; Possible Closing Reception at MFA Circle Gallery @ 4 PM
Nov 27 – 28	Pick Up Hand-Delivered Work 11 AM – 4 PM
Nov 30	Shipped Work Will Be Sent

MFA Circle Gallery Celebrating 59 Years

18 State Circle, Annapolis, MD | Open daily from 11 AM – 5 PM
410-268-4566 | info@mdfedart.org | mdfedart.org
MD Relay 7-1-1 or 1-800-735-2258
Circle Gallery is accessible to people with mobility disabilities

Established in 1963, MFA is a 501(c)(3) non-profit arts organization supported by individual, corporate, and public sector contributions, including the Maryland State Arts Council and the Anne Arundel County Arts Council. For membership and exhibition information, please visit mdfedart.org.