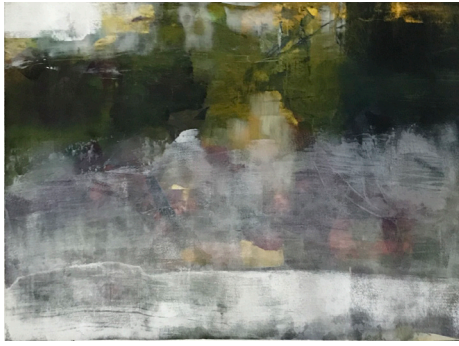


mfa Winter Member Show 2022



In the Time of Covid,
multi-dimensional/mixed media,
by MFA Member Mary Catherine Scire
from Winter Member Show 2021

Maryland Federation of Art (MFA) invites all MFA members residing in the United States, DC, Puerto Rico, Canada, and Mexico to enter the 2022 Winter Member Show. Any original 2D or 3D work will be considered. Works selected will be on display at MFA Circle Gallery from January 5 – 22, 2022.

JUROR INFORMATION

Gerald Ross, Director of Exhibitions, Curator and Adjunct Faculty at the Maryland Institute College of Art.

TERMS OF ENTRY

- Entry is open to artists residing in the United States, DC, Puerto Rico, Canada, and Mexico.
- Entering this exhibition indicates understanding and agreement on the part of the artist with the conditions stated here and at mdfedart.com/mfa-general-guidelines. Work must meet delivery and exhibition guidelines to be included in the event. MFA may determine work ineligible if entry guidelines are not followed. Work delivered must correspond with the images submitted to the juror.
- Images of accepted works may be used at the sole discretion of MFA for promotional purposes including, but not limited to: the invitation, catalog, website, social media, or a subsequent year's prospectus. Images will include attribution wherever possible.
- Work cannot be withdrawn before the end of the event.
- Artists will retain 75% from sales. MFA will retain 25% commission on any work sold through MFA.
- Work must be for sale. Work can be set to Price on Request (POR).

ENTRY REQUIREMENTS

- All work must be entered by uploading JPEG images through MFA's online entry system. Set pixel dimension to around 3,000 pixels on the longest side. File size may be no more than 5 MB. Images for the juror must correspond with the actual work. Visit mdfedart.org/portfolio/240 to submit your work.
- For video submissions: upload a still frame from your video and put a public YouTube or Vimeo link to the video in the "media" section.
- All entries must be original and completed solely by the artist's hand. A maximum of 6 original works created within the past 3 years may be entered. Work previously exhibited at MFA Circle Gallery is not eligible for re-entry.
- Maximum size of work, including edges of artwork or frame, cannot exceed 72" in any direction. Artists may be asked to assist with the installation of oversized work (greater than 60" or over 40 lbs).

ENTRY FEE

- 1 or 2 entries \$25 for MFA Members (\$95 for non members, includes one year of MFA Membership). Additional 4 entries \$5 each. Entry fees are non-refundable.

LIABILITY

- Artwork will be handled with all possible care. MFA will not be responsible or liable for loss or damage from any cause whatsoever. Insurance, if desired, must be carried by the artist.

NOTIFICATION

- All artists will receive notification by email. Accepted artists and artwork will also be posted on MFA's website.
- The notice to accepted artists will include specific details and may vary from prospectus. See website for more details.

AWARD

- Cash awards total \$550.

SCHEDULE

Oct 17	Online Entry Opens for Submissions
Nov 17	Entry Deadline
Dec 14	Notification
Dec 27 – 30, Jan 2	Accepted and Shipped Work Must Arrive at MFA Circle Gallery
Jan 5	Exhibition Opens
Jan 9	Virtual Awards Presentation @ 4 PM
Jan 22	Exhibition Closes; Closing Reception at MFA Circle Gallery @ 4 PM
Jan 23 – 24	Pick Up Hand-Delivered Work 11 AM – 4 PM
Jan 26	Shipped Work Will Be Sent

MFA Circle Gallery Celebrating 50+ Years

18 State Circle, Annapolis, MD | Open daily from 11 AM – 5 PM
410-268-4566 | info@mdfedart.org | mdfedart.org
MD Relay 7-1-1 or 1-800-735-2258
Accessible to people with mobility disabilities

Established in 1963, MFA is a 501(c)(3) non-profit arts organization supported by individual, corporate, and public sector contributions, including the Maryland State Arts Council and the Anne Arundel County Arts Council. For membership and exhibition information, please visit mdfedart.org.