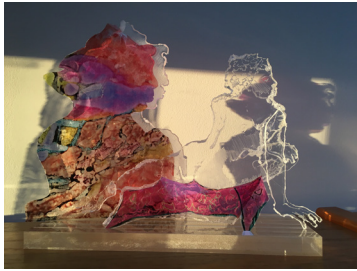


mfa Digital Directions 2022



Homage to N.A.D.,
multi-dimensional/mixed media,
by Donna Masi
from Digital Directions 2021

Everybody is going digital. Computer software and technology have forever expanded the ways artists capture and produce their work. From photographers cobbling together scenes in photoshop to painters and animators manipulating a computer canvas, there are no limits to what an artist can create digitally, and this show will be a celebration of the futuristic road we are driving down (hands-free, of course). 2D or 3D image-based work created and/or produced through computer software is eligible for this show. This includes, but is not limited to, digitally produced photography, digital painting, illustration, graphic design, digital video, and non-film projection. Works selected will be on exhibition at Maryland Federation of Art's Circle Gallery from January 26 to February 26, 2022. Exhibition Chair: Emil Petrucio.

JUROR INFORMATION

Jonathan Monaghan is an artist working across a range of media, including prints, sculpture and computer animated video, to produce otherworldly objects and narratives. Drawing on wide-ranging sources, such as historical artworks and science fiction, his fantastical pieces uncover subconscious anxieties associated with technology and consumerism. Past exhibitions include The Sundance Film Festival, The Hermitage Museum in Saint Petersburg, and The Palais de Tokyo in Paris. His work has been featured in several media outlets including The New York Times, Vogue, and The Washington Post. His work sits in numerous public and private collections including The Crystal Bridges Museum of American Art and the Washington D.C. Art Bank Collection. Visit Jonathan's website at jonathanmonaghan.com.

TERMS OF ENTRY

- Entry is open to artists residing in the United States, DC, Puerto Rico, Canada, and Mexico.
- Entering this exhibition indicates understanding and agreement on the part of the artist with the conditions stated here and at mdfedart.com/mfa-general-guidelines. Work must meet delivery and exhibition guidelines to be included in the event. MFA may determine work ineligible if entry guidelines are not followed. Work delivered must correspond with the images submitted to the juror.
- Images of accepted works may be used at the sole discretion of MFA for promotional purposes including, but not limited to: the invitation, catalog, website, social media, or a subsequent year's prospectus. Images will include attribution wherever possible.
- Work cannot be withdrawn before the end of the event.
- Artists will retain 70% from sales (75% for MFA Members). MFA will retain 30% commission (25% for MFA Members) on any work sold through MFA.
- Work must be for sale. Work can be set to Price on Request (POR).

ENTRY REQUIREMENTS

- All work must be entered by uploading JPEG images through MFA's online entry system. Set pixel dimension to around 3,000 pixels on the longest side. File size may be no more than 5 MB. Images for the juror must correspond with the actual work. Visit mdfedart.org/portfolio/238 to submit your work.
- For video submissions: upload a still frame from your video and put a public YouTube or Vimeo link to the video in the "media" section.
- All entries must be original and completed solely by the artist's hand. A maximum of 6 original works created within the past 3 years may be entered. Work previously exhibited at MFA Circle Gallery is not eligible for re-entry.
- Maximum size of work, including edges of artwork or frame, cannot exceed 72" in any direction. Artists may be asked to assist with the installation of oversized work (greater than 60" or over 40 lbs).

ENTRY FEE

- 1 or 2 entries \$40 (MFA Members \$25). Additional 4 entries \$5 each. Entry fees are non-refundable.

LIABILITY

- Artwork will be handled with all possible care. MFA will not be responsible or liable for loss or damage from any cause whatsoever. Insurance, if desired, must be carried by the artist.

NOTIFICATION

- All artists will receive notification by email. Accepted artists and artwork will also be posted on MFA's website.
- The notice to accepted artists will include specific details and may vary from prospectus. See website for more details.

AWARD

- Cash awards total \$1,000.

SCHEDULE

Sept 29	Online Entry Opens for Submissions
Nov 28	Entry Deadline
Dec 21	Notification
Jan 19 – 23	Accepted and Shipped Work Must Arrive at MFA Circle Gallery
Jan 26	Exhibition Opens
Feb 6	Virtual Awards Presentation @ 4 PM
Feb 26	Exhibition Closes; Closing Reception at MFA Circle Gallery @ 5 PM
Feb 27 – 28	Pick Up Hand-Delivered Work 11 AM – 4 PM
Mar 2	Shipped Work Will Be Sent

MFA Circle Gallery Celebrating 50+ Years

18 State Circle, Annapolis, MD | Open daily from 11 AM – 5 PM
410-268-4566 | info@mdfedart.org | mdfedart.org
MD Relay 7-1-1 or 1-800-735-2258
Accessible to people with mobility disabilities

Established in 1963, MFA is a 501 (c) (3) non-profit arts organization supported by individual, corporate, and public sector contributions, including the Maryland State Arts Council and the Anne Arundel County Arts Council. For membership and exhibition information, please visit mdfedart.org.