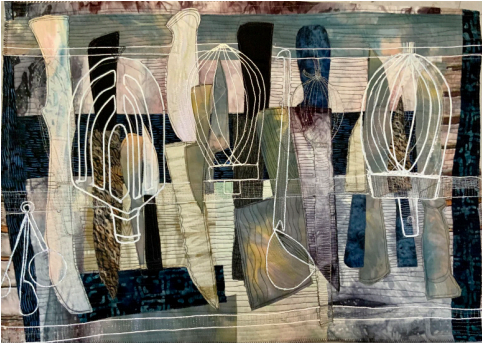


# mfa Restaurant Opportunities 2022



Maryland Federation of Art's Restaurant Opportunities program offers MFA Members a chance to be considered for a three month exhibition at a local Annapolis restaurant during 2022. Entry is open to new and established MFA member artists who are located in Maryland. Entries of original 2D work may be submitted for consideration. Exhibiting artists will be chosen by MFA staff based on a variety of factors, including, but not limited to, proximity of geographic location, style of work, and suitability of work for a family restaurant.

Visit [mdfedart.org/portfolio/233/](http://mdfedart.org/portfolio/233/) to apply.

Susan Callahan, Tools, textiles, from Food for Thought 2021

## ENTRY TERMS

- *Restaurant Opportunities* is open to current and new MFA Members. Non-members, if desired, may join immediately prior to entry.
- Entry is open to artists from the state of Maryland.
- Entering this exhibition indicates understanding and agreement on the part of the artist with the conditions stated here and at [mdfedart.com/mfa-general-guidelines](http://mdfedart.com/mfa-general-guidelines).
- Work must meet delivery and exhibition guidelines to be included in the event. MFA may determine work ineligible if entry guidelines are not followed.
- Images of accepted works may be used at the sole discretion of MFA for promotional purposes including, but not limited to, the website, social media, or a subsequent year's prospectus. Images will include attribution wherever possible.
- Artists will retain 70% from sales.
- Work cannot be withdrawn or sold outside of the exhibition while such work is on display at the restaurant.

## ENTRY REQUIREMENTS

- To be considered, artists must submit exactly 6 original works created within the past 3 years and which are representative of the artist's body of work. If accepted for the exhibition, artists will be expected to exhibit between 15 – 18 pieces of work, depending on the size of each piece.
- All entries must be original and completed solely by the artist's hand.
- Artists must also submit an artist's statement of no more than 200 words, describing the artist's work.
- All work and artist's statement must be entered by uploading JPEG images through MFA's online entry system. Set pixel dimension to 3,000 pixels or less on the longest side. File size may be no more than 5 MB. Legible screen shots of a text document are acceptable. Work submitted without an artist statement will not be considered.
- Work must be for sale. Work cannot be set to Price on Request (POR).
- Maximum size of work, including edges of artwork or frame, cannot exceed 36" x 36." Artists are expected to assist with the installation, replacing sold work, and de-installation.

## ENTRY FEES

- Entry fees are \$20 for MFA Members and \$90 for non-members (includes 1 year of MFA Membership).
- Entry fees are non-refundable.

## NOTIFICATION

- All artists will receive notification by email. Accepted artists will be posted on MFA's website.
- The notice to accepted artists will include specific details and may vary from prospectus.

## LIABILITY

- Artwork will be handled with all possible care. Neither MFA nor the restaurant will not be responsible or liable for loss or damage from any cause whatsoever. Insurance, if desired, must be carried by the artist.

## SELECTION

- MFA staff will contact selected artists to coordinate the scheduling of the exhibition.

## SCHEDULE

**Jul 28** Online Entry Opens for Submissions

**Sept 29** Online Entry Closes for Submissions

**Oct 12** Notification Announcement

## MFA's Circle Gallery Celebrating 50+ Years

Consistently Voted Best Gallery in Annapolis

18 State Circle, Annapolis, MD | Open daily from 11 AM – 5 PM

410-268-4566 | [www.mdfedart.org](http://www.mdfedart.org) | [info@mdfedart.org](mailto:info@mdfedart.org)

MFA Circle Gallery is accessible to people with disabilities